

BIOLOGICAL SAFETY CABINET A2

Series Models BSC-T- 1100 / 1300 ADVANCE

Characteristics

- Biological safety cabin type: CLASS II according to EN 12469 regulation.
- Work area and work surface built in stainless steel AISI 304 with segmented and removable trays.
- Sliding front laminate glass with alarm position. Automatic or Manual.
- Glass side walls.
- The recycled air is filtered by an absolute HEPA H-14 filter (efficiency 99.999% MPPS Standard EN1822 referred to particles of 0.3um.) and sent to the work area at a speed of 0.33 m/s
- Partial air recirculation according to regulations: 30% ejection and 70% recirculation.
- The air expelled to the outside is filtered by an absolute filter HEPA H-14 (efficiency 99.999% MPPS Standard EN1822 referido a partículas de 0,3um) independent dedicated to this purpose.
- Airflow-independent anemometric sensors to measure expelled and propelled air velocities.
- Work area maintains laminar flow conditions with an air purity type ISO 4 (According to ISO 14644) or Class 10 (according to Fed. Std. 209).
- Protection barrier in work area with speed greater than 0.53 m / s.
- Microprocessor-controlled cab with upgradeable FLASH memory and external color touch display for easy visualization of cabin control parameters (speeds, flow rates, plenum pressure, ejection barriers, humidity, temperature, etc ...).
- The cab is easy to operate for white/ultraviolet lighting control, internal electrical outlet.
- Alarms to detect problems in the drive system and the protection barrier by negative pressure and door opening, by voice and light warning on the screen.

- Fluorescent and UV lighting excluded. Germicidal kit – zenithal ultraviolet light.
- Working voltage 110-220 V. 50/60 Hz. Power consumption less than 190W.
- Operation with low power consumption EC motors.
- Standard cabin Includes U.V. light; 2 Electrical outlets of 110-220 volts.

Optional Accessories:

- 3+3 Side sockets for optional service valves (gas, vacuum, water...)
- Hydrogen Peroxide decontamination connector.
- Unit support table.



PRINCIPAL OFFICE

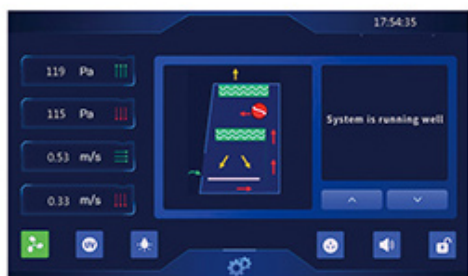
José Echegaray, 8 Local 1-3
28100 – Alcobendas, Madrid, Spain
☎ +34 91 662 44 73 ☎ +34 91 662 44 69
🌐 www.tdi.es ✉ ventas@tdi.es

DELEGATIONS

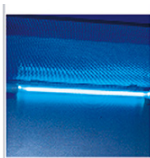
Catalunya +34 676 351 264
Galicia +34 639 486 955
Andalucía +34 639 481 756

BIOLOGICAL SAFETY CABINET A2

Series Models BSC-T- 1100 / 1300 ADVANCE



Display Touch Color



UV



Interior Steel
Stainless



Plugs



Stepper motor

Advantages

- ❖ Biological safety cabinet CLASS II according to EN 12469-2000 and also meets the main requirements NSF 49 (Class II type A2/B3) and BS 5726/:2005. Certified with TÜV – GS quality seal.
- ❖ System of independent fans in order to control the expulsion and impulsion of the ultrafiltered air separately.
- ❖ Display Touch Color. All functions visible on the screen (laminarity, barriers, temperature, humidity, filter clogging, calibration menu and adjustment of anemometric sensors, etc ...)
- ❖ Access control by key and/or code. With time operation functions for different parameters.
- ❖ Possibility to program time of automatic on and off of the cabin and start-up of the UV light.
- ❖ Ergonomically tested, thanks to the noise level that is less than 55 dBA, below the level required by the 65 dBA standard.
- ❖ Monitoring and adjustment of the clogging of the filters minimizing the cost of replacing them.
- ❖ Sectioned Work Surface and Side Crystals.
- ❖ Automatic or Manual Front Glass, with ergonomic position (inclined).
- ❖ It allows reduced flow working mode when closing the front window, ensuring energy savings and maintaining ambient sterility when the cabin is not in use.
- ❖ Ergonomic armrest.

PRINCIPAL OFFICE

DELEGATIONS

BIOLOGICAL SAFETY CABINET A2

Series Models BSC-T- 1100 / 1300 ADVANCE

Specifications

MODEL	BSC-T-1100A2	BSC-T-1300A2
Workspace	980 X 600 X 650 mm	1280 X 600 X 650 mm
Exterior dimensions	1087 x 800 x 2260 mm	1383 x 800 x 2260 mm
Transport dimensions	1240 x 1060 x 1880 mm	1530 x 1060 x 1880
Weight	250 kg	320 Kg
Weight (transport)	270 kg	345 Kg
Material	Work area and constructed area in AISI 304 stainless steel	
Control system	Microprocessor with flash memory	
Display	Touch Play (color)	
Main filter	HEPA H14 absolute filter with an efficiency of 99.999% mpps according to EN1822	
Ejection filter	ULPA U15 absolute filter with an efficiency of 99.999% mpps according to EN1822	
Barrier	0,53 m/s	
Laminar flow	0,33 m/s	
Air recirculation	70%	
Expulsión de aire	30%	
Front glass	Automatic or manual electronic sliding (tempered safety glass)	
Air purity rating	Clase 10 / ISO 4	
Noise level	<55 dB	
Lighting	12W * 2 >1000LUX	14W * 2 >1000LUX
Ultraviolet lamp	20W * 1 (Life indicator UV: 254 nm)	30W * 1 (Life indicator UV: 254 nm)
Regulations applied	NSF 49, UNE EN 12469, UNE EN 13485, EN 61010	

Reference for Orders

Reference	Description
425-BSC-T-1100 A2	High microbiological safety cabin C10 mod. BSC-T-1100 ADVANCE
425-BSC-T-1300 A2	High microbiological safety cabin C10 mod. BSC-T-1300 ADVANCE